

## Location Composition

Category	County	% of State
2010 Population	246,956	8.32%
2010 Households	91,959	8.20%
2010 Group Quarters	9,878	9.87%

RACE/ETH	#POP	%POP	LANG.	#POP	%POP
Black	167,487	67.82%	English	238,865	96.72%
White	74,006	29.97%	Spanish	4,235	1.71%
Hispanic	3,478	1.41%	French	707	0.29%
Asian	1,879	0.76%	Other Indic	652	0.26%
Other race	1,802	0.73%	African lang.	336	0.14%
Multiracial	1,375	0.56%	Hindi	251	0.10%
Nat. Amer.	303	0.12%	Tagalog	196	0.08%
Hawaiian/PI	103	0.04%	French Creole	192	0.08%

## Getting Involved

To learn more about this location, please contact Sheryl Ng (sng@mbcb.org) in the MBCB Church Planting Department.

### NOTES:

The Communities Summary identifies the top three types of communities in the county, the number of households, and the percent of the county.

The Lifestyle Summary identifies the top six lifestyle segments in the county, the number of households, percent of the county households, and the percent of households that are unreached.

The numbers in the Evangelscape communicate the most compelling reasons why this community needs churches and believers to intercede in missional prayer and activity.

Churchscape indicators reveal a snapshot of the extent of evangelical presence in the county. The last three items provide the household percent that is "affiliated" with the top religious groups. "Other World Religions" include religions other than Islam, Hinduism, Buddhism, and Christianity.

Location Composition: Listed are the total number of people and the total number of households in the county.

Race/Ethnicity gives the population count and percentage of population for each of the race / ethnicity categories. The language section gives the population count age 5 yrs+ that speaks the language at home.

© Copyright 2012 by the Intercultural Institute for Contextual Ministry and its data suppliers. Additional information at [www.iicm.net](http://www.iicm.net).

## Reaching Hinds County, MS

# MISSIONAL COUNTY DIGEST

## Top County Communities

### Inside

Communities	1
Lifestyles	2
Evangelscape	2
Needscape	3
Churchscape	3
Composition	4
Ethnoscape	4
Notes	4

## Luke 10:2

Jesus told them, "The harvest is plentiful, but the workers are few. Ask the Lord of the harvest, therefore, to send out workers into his harvest field."

In partnership with:



[www.iicm.net](http://www.iicm.net)



Households: 41,049  
Percent: 44.64%

### Urban Communities

The people are poor, struggling and largely single. Some are single parents with large families; most have below-average incomes. Unemployment is double the national average. For the African-American and Hispanic families in Urban Communities, struggling to balance priorities and budgets in a climate of institutional prejudice creates a lack of stability and control. Residing within major metropolitan cities and towns, most households live in apartments.



Households: 24,706  
Percent: 26.87%

### Aspiring Communities

Young, ambitious and culturally diverse, they are the evolving voice of American society. In Aspiring Communities, truth is centered around "me" and everything is interconnected. The majority of people in this group are between the ages of 18 – 34. Sixty percent are renting singles; others live on military bases or in college dorms. Members of Aspiring Communities are four times more likely to be unemployed. Of those who work, most live in or conveniently close to metropolitan areas.



Households: 16,297  
Percent: 17.72%

### Upscale Communities

As the wealthiest households in the nation, upscale communities boast high household incomes, significant home values and top educational achievements. Households in these exclusive suburban neighborhoods are headed by predominantly white, college educated, Baby Boom parents. Most adults work as executives and white collar professionals. They are active members of the community in business clubs, environmental groups and the arts.

## Top Lifestyle Segments



### Minority Metro Communities (74% Unreached)

Minority Metro Communities reflects the nation's growing African-American middle class. With nearly three-quarters of the residents African-American and half the households earning more than \$50,000, this cluster is a testament to high educational achievement and professional employment among African-Americans. Concentrated in inner-ring suburbs, these households earn above-average incomes from a mix of service industry and white-collar jobs.

Households: 22,749

Percent: 24.74%



### African-American Neighborhoods (70% Unreached)

Young, working-class city dwellers make up African-American Neighborhoods. About three-quarters of the households are African-American and one in four adults is under 35 years old. This is an economically challenged area characterized by relatively high unemployment, low educational levels and single-parent families. A majority of residents have completed high school or some college, and most are earning their paychecks through jobs in health, education and food service.

Households: 17,553

Percent: 19.09%



### Struggling City Centers (68% Unreached)

Struggling City Centers consists of very low-income households living in city neighborhoods. Home to the highest concentration of African-Americans in the nation-nearly 90 percent of all households-the cluster faces hard economic challenges. One-third of households haven't finished high school, with a similar percentage containing single-parent families. One in five adults are under 35 years old and the median household income is only half the national average.

Households: 14,940

Percent: 16.25%

## Evangelscape: Spiritual Indicators

SPIRITUALITY INDICATOR	COUNTY HOUSEHOLDS	COUNTY %
Unreached	65,669	71.41%
Religious but NOT Evangelical	24,482	26.62%
Spiritual but NOT Evangelical	5,862	6.37%
Non-Evangelical but NOT Interested	36,161	39.32%

## Needscape: Social Issues

MAJOR SOCIAL ISSUES	#POP	%POP
Adult Obesity (as % of Adults yrs 25+)	55,316	36.20%
Adult High School dropouts (as % of Adults yrs 25+)	50,884	33.30%
Adult Poor or Fair Health (as % of Adults yrs 25+)	30,867	20.20%
Children in Poverty (as % of all children)	21,813	34.10%
Adult Unemployment Rate (as % of Adults yrs 25+)	11,184	9.50%
Household Violent Crime incidents (as % of all hhlds)	4,918	5.35%
Adult STD Incidents (as % of Adults yrs 25+)	3,550	2.32%

Note: A "0" means that this particular data item is not available for this county.

## Motivescape: Attitudinal Indicators



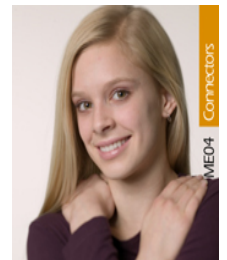
**Approvers**  
Looking for recognition

# HH: 66,274  
% HH: 72.07%



**Creators**  
Looking for innovation

# HH: 61,431  
% HH: 66.80%



**Connectors**  
Looking for relationship

# HH: 59,885  
% HH: 65.12%

## Churchscape: Religious Indicators

SPIRITUALITY INDICATOR	COUNTY HOUSEHOLDS	COUNTY %
Active Evangelical HHlds	18,956	20.61%
Evangelical Protestant Heritage	50,761	55.20%
Other World Religions Heritage	16,553	18.00%
Mainline Protestant Heritage	10,667	11.60%